



Technical Data Sheet.

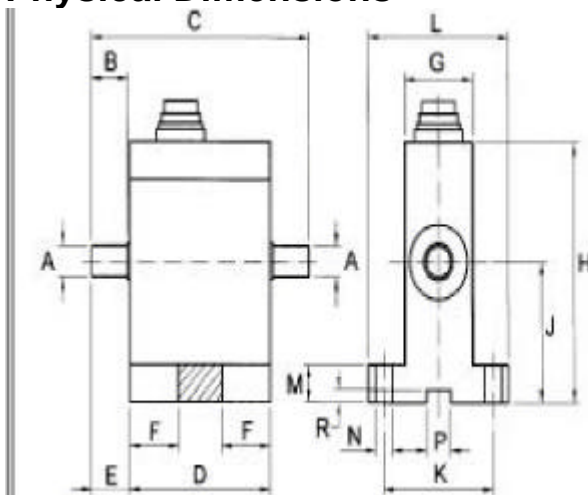
TRN. Torque Transducer. (1Nm to 50Nm Capacity).



The TRN Torque Transducer is particularly suited to test rig applications with its built in mountings.

It is a brushless design allows speeds of upto 12,000 rpm.

Physical Dimensions



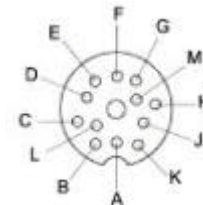
TRN-	1/2/5/10	20/50
A	10 g6	17 g6
B	15	22
C	90	106
D	58	59
E	16	23
F	20	20
G	28	38
H	83	102
J	45	63
K	45	60
L	58	85
M	12	15
N	7	9
P	10	10
R	4	4

(All dimensions in mm)

Specifications.

Full scale output	0±5V
Non-linearity	<±0.1% fs
Repeatability	<±0.05% fs
Hysteresis	< ±0.1% fs
Overload Capacity	150% fs
Span Shift	< ±0.015%/C°
Zero Shift	< ±0.015%/C°
Operating Temp	+5 to +50°C
Storage Temp	-25 to +80°C
Supply Voltage	11 to 26VDC
Supply Current	100mA
Maximum frequency	3kHz

Pin Connections



A	GND, calibration input	G	Angle 2 (90° from angle 1)
B	Angle 1	H	Supply angle +5V
C	V out ±5V for rated torque	J	Measuring range detection
D	GND signal output	K	Cal input +5 – 30VDC
E	GND, Supply, Angle	L	Option measuring range
F	+V supply +11-26V, 1 watt	M	Screen