



Technical Data Sheet.

CLS-NA. Compression Load Cells. (10N to 10KN Capacity).

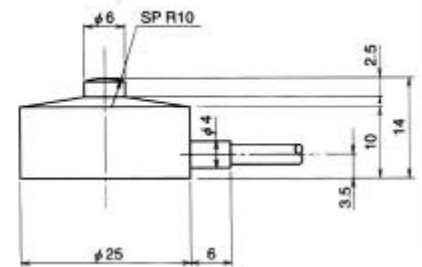
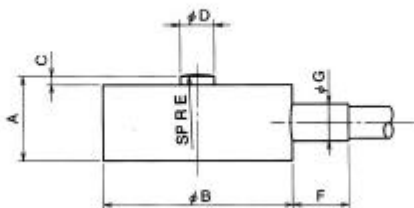
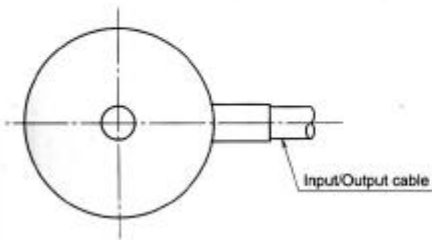
The CLS-NA Load Cell is an ultra-compact load cell with capacities ranging from 10N up to 10KN. It is can be used for measuring compressive forces in industrial assembly and testing machines.



Physical Dimensions

CLS-10NA~5KNA

CLS-10KNA



Specifications.

Type	CLS-10NA	CLS-20NA	CLS-50NA	CLS-100NA	CLS-200NA	CLS-500NA	CLS-1KNA	CLS-2KNA	CLS-5KNA	CLS-10KNA
Capacity	10N	20N	50N	100N	200N	500N	1kN	2kN	5kN	10kN
Rated Output	1mV/V (2000×10 ⁻⁹) ±20%				1.5mV/V (3000×10 ⁻⁹) ±10%				1mV/V (2000×10 ⁻⁹) ±20%	
Non-linearity	0.5%RO				0.5%RO				1%RO	
Hysteresis	0.5%RO				0.5%RO				1%RO	
Temperature Effect on Zero	0.1%RO/°C				0.1%RO/°C				0.1%RO/°C	
Temperature Effect on Span	0.05%/°C				0.05%/°C				0.05%/°C	
Temperature Range Allowable	-10~+60°C				-10~+60°C				-10~+60°C	
Over Load	150%				150%				150%	
Resistance	3500±2%				3500±1%				3500±1%	
Exciting Voltage Recommended	Less than 2V				Less than 2V				Less than 2V	
Exciting Voltage Allowable	5V				5V				5V	
Initial Unbalance	150%RO				150%RO				100%RO	
Electrical Connection	φ1.3mm 0.03mm ² 4-core Vinyl Cable 2m				φ3mm 0.05mm ² 4-core Shielded Chloroprene Cable 2m				φ3mm 0.05mm ² 4-core Shielded Chloroprene Cable 2m	

Type	A	B	C	D	E	F	G	Weight (g)
CLS-10NA	4	12	0.7	1.5	2	4	1.8	3
CLS-20NA	4	12	0.7	1.5	2	4	1.8	3
CLS-50NA	4	12	0.7	1.5	2	4	1.8	3
CLS-100NA	4	12	0.7	1.5	2	4	1.8	3
CLS-200NA	9	20	1	2.5	8	6	4	12
CLS-500NA	9	20	1	2.5	8	6	4	12
CLS-1KNA	9	20	1	2.5	8	6	4	12
CLS-2KNA	10	20	1.5	3	8	6	4	12
CLS-5KNA	12.5	25	2	4	10	6	4	40
CLS-10KNA	As per the figure							40